



## Waterways speed limit change

---

[nsw.gov.au/topics/using-waterways/restrictions-and-closures/marine-notices/](https://nsw.gov.au/topics/using-waterways/restrictions-and-closures/marine-notices/)

**Notice type:** Navigation advice

**Marine notice:** SY 2227

---

### Where

Port Hacking

### When

Monday 17th October 2022 until further notice

### Navigation advice

Transport for NSW advise that the five eight knot speed zone on Port Hacking have been changed to six knots zones. The zones include the entrance to Gunnamatta Bay channel, the Lilli Pilli/Gogerleys Point area, Yowie Bay, North West Arm and the Hacking River.

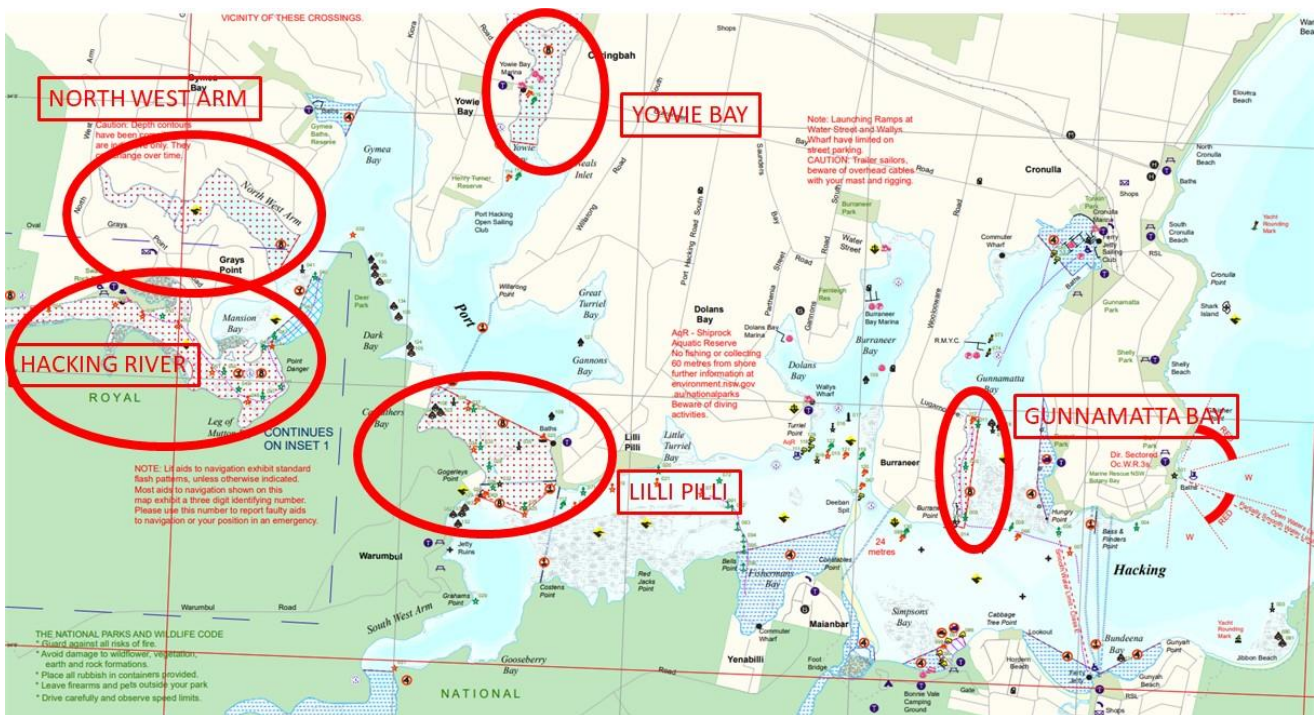
These changes are to support the Marine Safety Regulation amendments that reduced the speed that a vessel may travel at from 10 knots to 6 knots, if operating within 30m of an object, land or structure.

The changes to the speed along the speed restricted areas on Port Hacking is likely to result in safer boating due to vessel traveling at a slower speed and will help manage impacts of wash and lead to safer boating practices.

### Maps and charts affected

To see the area affected, refer to: Transport for NSW Boating Map – 9F (<https://www.nsw.gov.au/sites/default/files/2021-07/9f-port-hacking.pdf>).

# Waterways speed limit change on Port Hacking



AREA_NAME	AREA_DESCRIPTION
Port Hacking (Gunnamatta Bay) Area	The navigable waters of that part of Gunnamatta Bay enclosed by lines commencing in the south from the south eastern extremity of Burraneer Point in an easterly direction for 80 metres thence in a northerly direction for 700 metres thence in a westerly direction for 80 metres to a point on the shore at the public wharf at Lugarno Avenue Burraneer thence in a southerly direction along the shore to the point of commencement
Port Hacking (Yowie Bay) Area	The navigable waters of that part of Yowie Bay north of a line across the waterway commencing from a point on the shore approximately one hundred and fifty (150) metres north of the extremity of an unnamed point on the western shore of Neals Inlet in a westerly direction to a point on the opposite shore
Port Hacking (Lilli Pilli) Area	The navigable waters of that part of Port Hacking enclosed by lines firstly in the north commencing from the north western extremity of the public wharf and baths adjacent the end of Swan Street Lilli Pilli in a north westerly direction across the waterway to an unnamed point on the opposite northern shore of Carruthers Bay and secondly in the south commencing from a point on the south eastern extremity of Gogerley's Point in a generally south easterly direction for two hundred and seventy five (275) metres thence in a north easterly direction for four hundred and thirty (430) metres to the south western extremity of Lilli Pilli Point
Port Hacking (North West) Area	The navigable waters of the whole of the North West arm of Port Hacking north-west of a line extending in a north-easterly direction from the eastern extremity of Mansion point to the southern extremity of the headland on the opposite shore near the end of Coopernook Avenue
Port Hacking River Area	The navigable waters of that part of Port Hacking River lying between the lower causeway at Audley and a line from Point Danger to Gray's Point

## Contact Transport for NSW information line

For further information concerning this navigation advice, please contact the Transport for NSW information line on:

Phone: 13 12 36  (<https://www.nsw.gov.au/tel:131236>)

### Monday - Friday

8:30am - 5:30pm

### Saturday - Sunday

8:30am - 4:30pm

View more contact options  (<https://roads-waterways.transport.nsw.gov.au/contact-us/phone-contacts.html>)